

## WATER IN FUEL

### APPLICABLE UK FORKS MACHINES: ALL

The below points will need to be checked when the water in fuel (WIF) light on the dash. This will also offer instruction on how to drain the fuel sediment filter.

#### T4i machines (Before Fleet V46882)

- Is the WIF light present on the dash.
- Hand Brake must be applied with the machine in neutral.
- Turn off the engine and remove ignition keys and isolator keys.
- Go to the engine bay and open the bonnet
- Locate fuel sediment filter. Fuel sediment filter located to the right of the engine towards the front of the machine.



- At the bottom of the filter is a glass bowl.
- Disconnect the plug located in the middle of the bowl on the WIF sensor (Wire should pull off).
- Turn the Black WIF sensor anti clockwise to drain the water.
- Turn the Black WIF sensor clockwise to tighten the sensor once water is drained.



Glass Bowl

Black WIF Sensor

WIF Plug

- This process may require repeating if there are error returns once restarted.

# BEST PRACTICE

## WATER IN FUEL (CONT.)

APPLICABLE UK FORKS MACHINES: ALL

T4F/Stage V Machines (After Fleet V46882)

- Is the WIF light present on the dash.
- Hand Brake must be applied with the machine in neutral.
- Turn off the engine and remove ignition keys and isolator keys.
- Go to the engine bay and open the bonnet
- Locate fuel sediment filter. Fuel sediment filter located to the right of the engine towards the front of the machine.



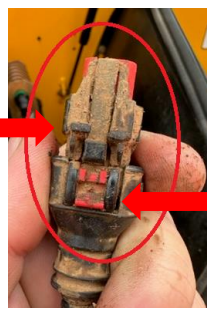
Black WIF Sensor

- At the bottom of the filter is a glass bowl.
- Disconnect the plug located in the middle of the bowl on the WIF sensor (Flick red clip down and push button on the plug to release).
- Turn the Black WIF sensor anti clockwise to drain the water.
- Turn the Black WIF sensor clockwise to tighten the sensor once water is drained.



Push Button

Red Clip (Up Position)



Red Clip (Down Position)

- This process may require repeating if there error returns once restarted.

**Note.** Water in a fuel system can cause major component failure if left. The sediment will require regular checks and draining to prevent chargeable damages.