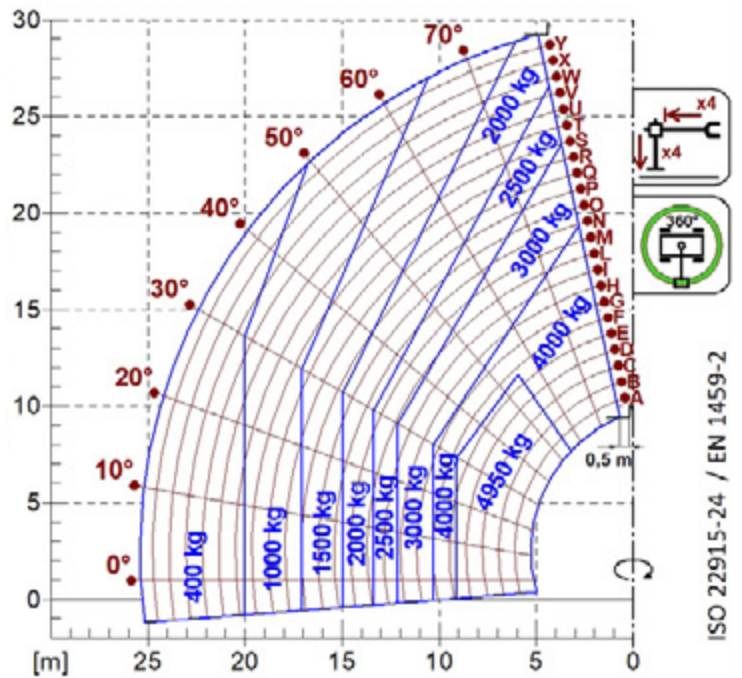
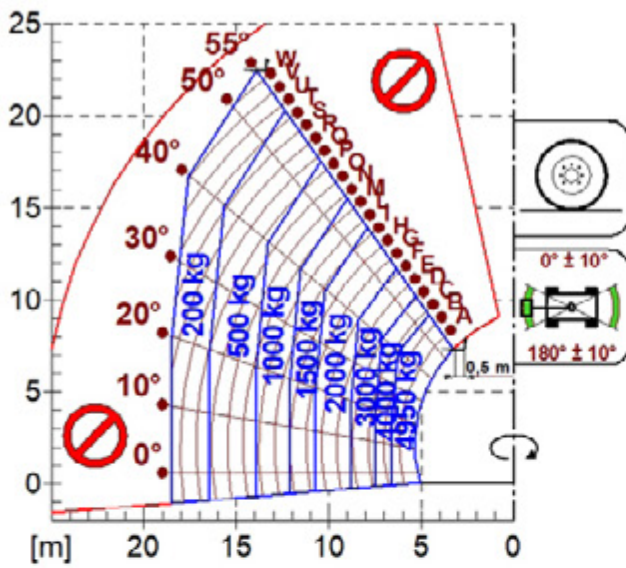
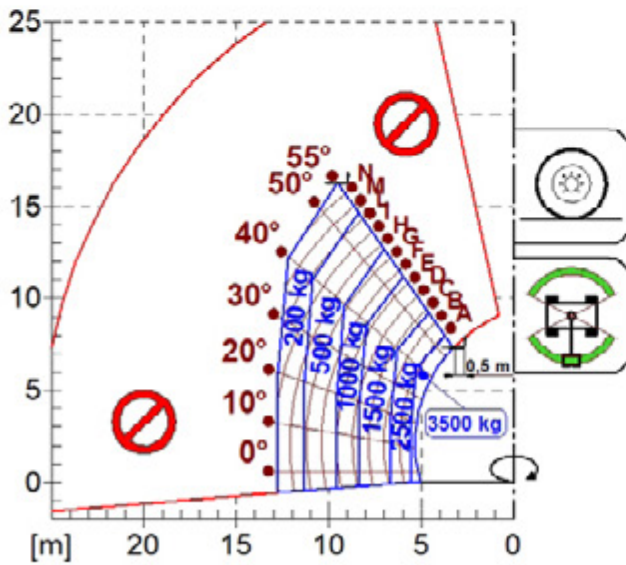


Load charts



ISO 22915-24 / EN 1459-2

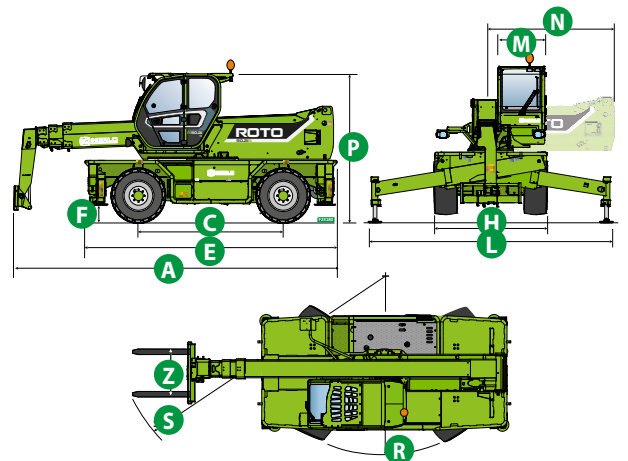
ROTO50.30

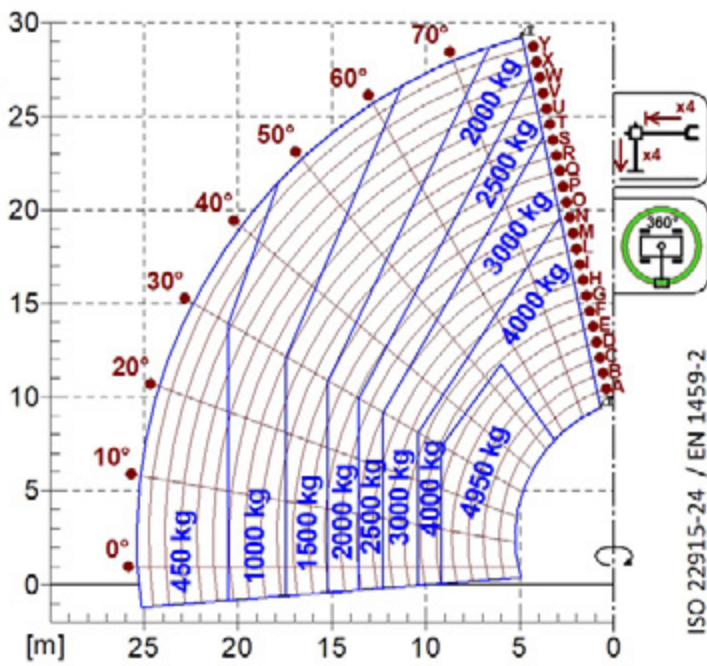


Dimensions



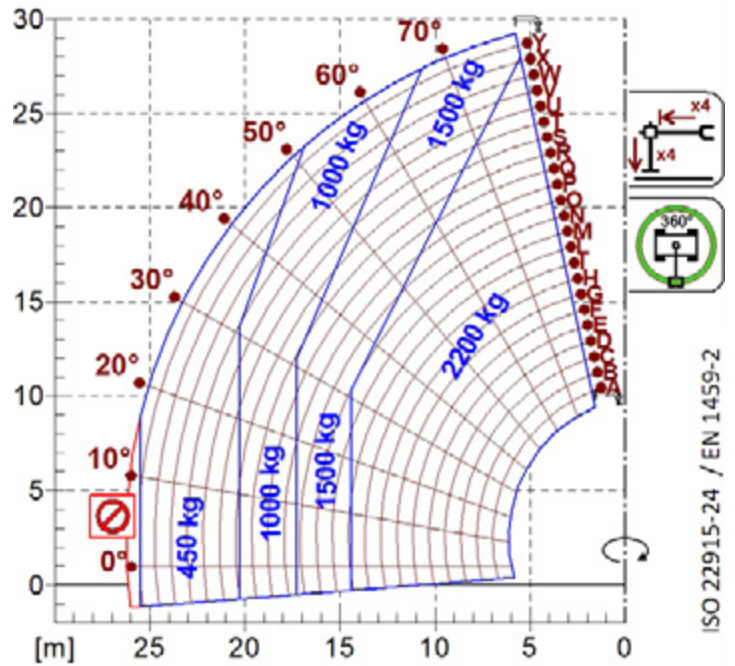
	ROTO 50.30		
A (mm)	7790		
C (mm)	3200		
E (mm)	5620		
F (mm)	290		
H (mm)	2490		
L (mm)	5260		
M (mm)	1010		
N (mm)	3170		
P (mm)	3160		
R (mm)	4500		
S (mm)	6770		
Z (mm)	850		





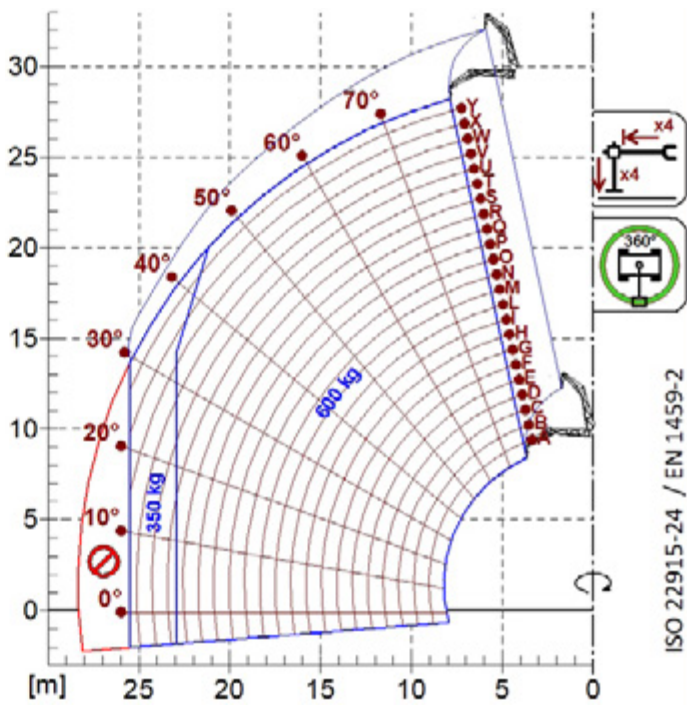
ISO 22915-24 / EN 1459-2

A1000



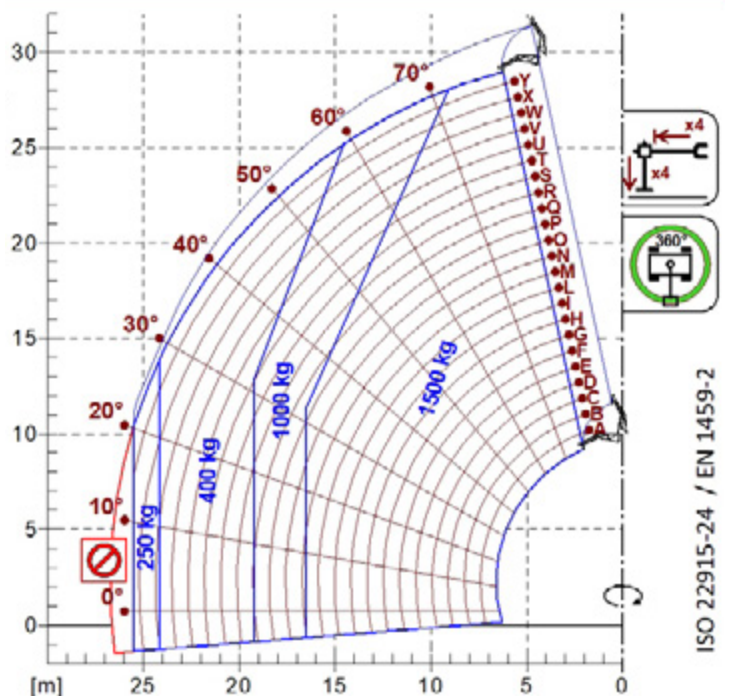
ISO 22915-24 / EN 1459-2

A1118B



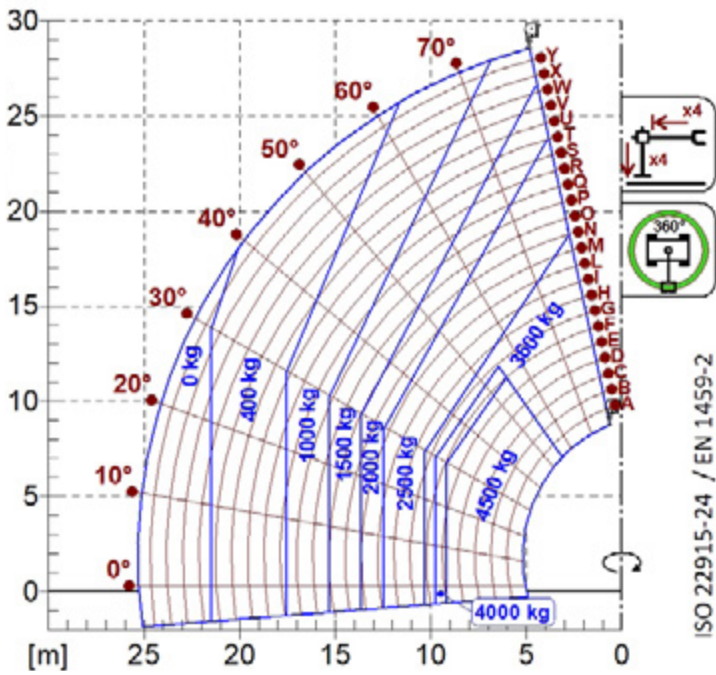
ISO 22915-24 / EN 1459-2

A1200B
A1300B

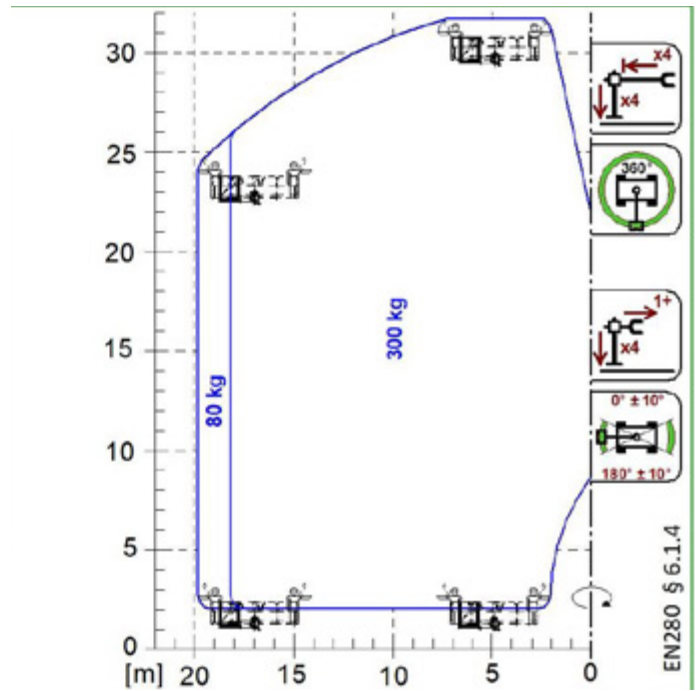


ISO 22915-24 / EN 1459-2

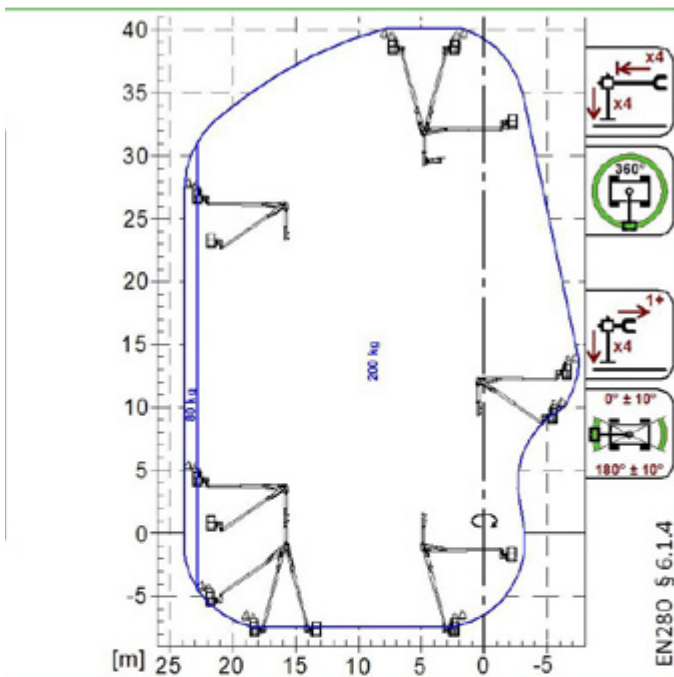
A1210B
A1310B



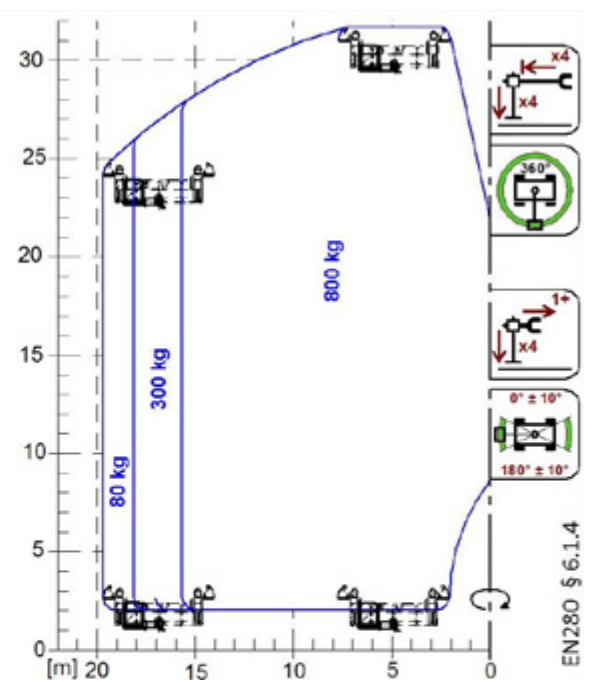
A2765
A2766



A1827
A1839



A1873



A1831