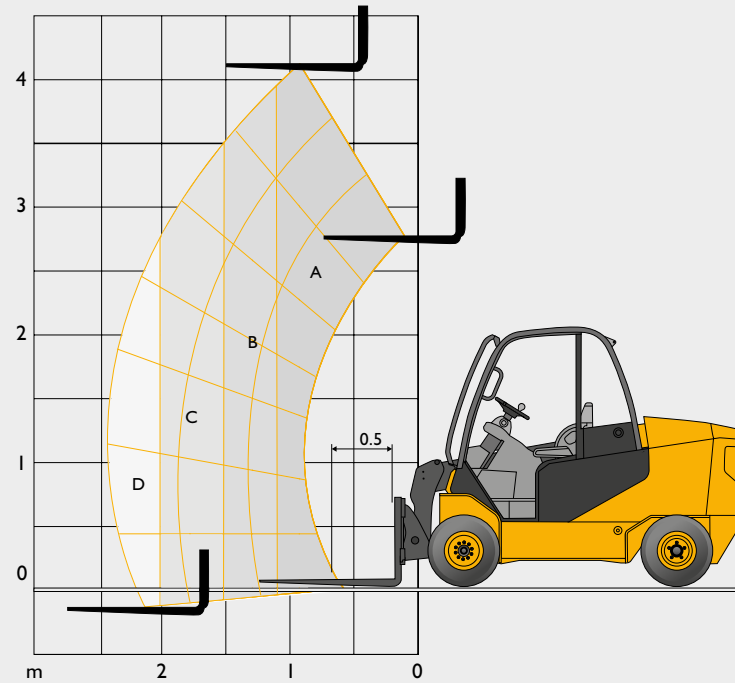


LIFT CAPACITIES



Capacity bands	30-19D
A	3000kg
B	2500kg
C	1950kg
D	1500kg
@ 2 metres	1950kg

Capacity bands	30-20D HL
A	3000kg
B	2500kg
C	2000kg
D	1750kg
@ 2 metres	2000kg

Capacity bands	30-23D 4x4
A	3000kg
B	2600kg
C	2300kg
D	1650kg
@ 2 metres	2300kg

Capacity bands	35-23D
A	3500kg
B	3000kg
C	2300kg
D	1750kg
@ 2 metres	2300kg

Capacity bands	35-26D 4x4
A	3500kg
B	3000kg
C	2600kg
D	2050kg
@ 2 metres	2600kg